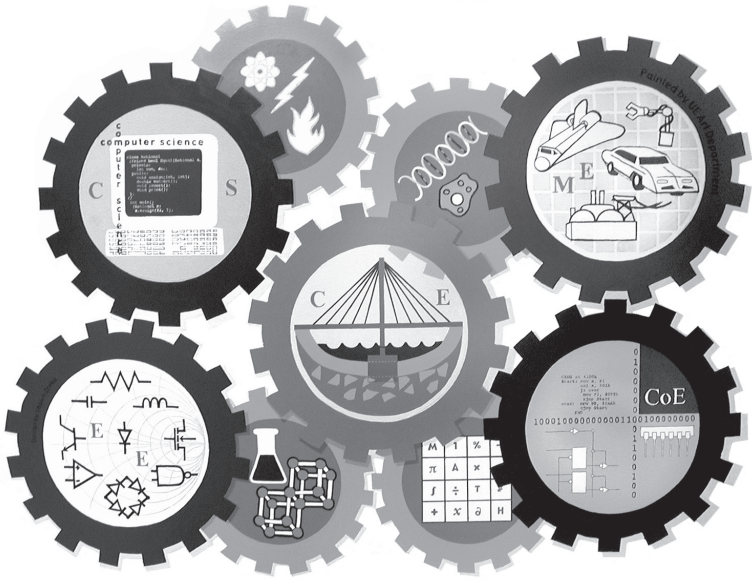


2024-25



*CONSTRUCTION MANAGEMENT  
GUIDEBOOK*

**UE** University  
of Evansville

*The University of Evansville operates under a nondiscriminatory policy with regard to race, color, creed or religion, national origin, gender, sexual orientation, age, or disability.*

# CONSTRUCTION MANAGEMENT PROGRAM GUIDEBOOK 2024-25

## Table of Contents

Construction Management Program Overview.....	2
Co-op and Intern Programs.....	4
Harlaxton Option.....	6
Honors Program.....	7
Degree Requirements.....	8
Construction Management Courses.....	10
Faculty and Staff.....	11

## Webpage

[evansville.edu/construction](http://evansville.edu/construction)

# CONSTRUCTION MANAGEMENT PROGRAM OVERVIEW

Construction managers are responsible for the planning, coordination, budgeting, and supervision of an array of construction projects. While they may have a main office to handle administrative duties, construction managers will spend much time in the field or on-site, monitoring projects and making important decisions for their team and the construction. The Construction Management program at UE gives heavy emphasis to both technical and managerial skills. Students not only learn design and planning but also construction methods, equipment, and codes. Safety is extremely important on the job, so students take an upper-level courses focusing on safety management methodology and OSHA compliance. Hands-on curriculum and internships will develop a strong foundation in planning, construction field operations, and project scheduling and management.

The Construction Management undergraduate program is designed to provide students with a basic understanding of mathematics, sciences, humanities, social sciences, communication skills, and the construction management discipline. Students follow a curriculum that provides a well-rounded fundamental understanding of construction management concepts in accordance with current practice. The curriculum prepares students to meet present and future challenges in the profession and to develop insights into economical, physical, social, and political constraints affecting the decision-making process in the construction management industry.

Today's construction managers must be adept at working in a global marketplace. To assist in meeting that challenge, the University of Evansville provides students with an opportunity for an international study abroad experience at Harlaxton in Grantham, England.

Students are introduced to construction industry concepts in the fall of their freshman year in Construction Management 101. The small number of freshmen in this course facilitates close interaction with a faculty member who is also the students' advisor. During their senior year, students will complete a yearlong capstone project under the supervision of a faculty member or industry partner. This experience will allow students to work in a team setting and apply knowledge and skills to real-world scenarios. Components of professional and ethical responsibility are incorporated in most Construction Management courses to prepare students for professional practice.

The University of Evansville is an intermediate size, private university with a strong emphasis on undergraduate education. UE is a liberal arts and sciences university. High-quality education that emphasizes both the liberal arts and professional degree programs, such as Engineering, Business, Education, and Nursing, is offered. This emphasis allows our students to obtain a quality, well-rounded education. With a campus of more than 2,000 students and over 75 areas of study, UE offers a dynamic experience of close, faculty-student interaction and diversity.

What differentiates UE's Construction Management program from larger university programs is the following:

- Students have the opportunity to study abroad at Harlaxton in England and still complete their Construction Management degree in eight semesters.
- Class sizes are small, allowing for close personal contact between students and professors and for design project opportunities.
- The faculty is dedicated to teaching, which gives the program great flexibility. Course content is kept up-to-date, and innovative instruction techniques, such as multidisciplinary team projects, active learning, and problem-based learning, are used in the classroom.
- All Construction Management laboratory equipment is dedicated to serving undergraduate Construction Management students. Labs are taught by professors, not graduate students.
- Emphasis is placed on preparing students to enter the practice of Construction Management upon graduation.
- A personalized co-op program, featuring alternating terms of paid, full-time professional employment and University attendance, is available.
- The University's size and diversity facilitates the ability of Construction Management students to interact with students and faculty in other programs, thus allowing free intellectual and social interchange.
- Students are mentored to develop a love of learning and discovery that will motivate them to be lifelong learners.

# CO-OP AND INTERN PROGRAMS

Construction Management majors are encouraged to participate in cooperative education. In the co-op program, a student completes the Bachelor of Science in Construction Management (BSCM) degree requirements in five years but at the end of that time, the student has a degree plus a minimum of three terms of experience as a construction manager.

The typical Construction Management co-op student attends classes the first two years as a traditional student. At the end of their sophomore year the co-op student begins summer work with a private company, government agency, or construction company. The student attends classes in the fall, then returns to work in the spring. Thereafter, the co-op student alternates between work and school.

<b>CO-OP CALENDAR</b>			
<b>Year</b>	<b>Fall</b>	<b>Spring</b>	<b>Summer</b>
1	School 1	School 2	Work option
2	School 3	School 4	Work 1
3	School 5	Work 2	School 6
4	Work 3	School 7	Work 4
5	School 8	School 9	

Students who are exceptionally well-prepared to enter the workforce may begin their co-op period in the summer after the freshman year. This is unusual, and most students begin after the sophomore year.

To enter the co-op program, students enroll in EXED 090. This is a noncredit course which is taken during the fall of the sophomore year. This course covers topics such as résumé writing, interviewing, job descriptions, and employer expectations. During the spring semester of their sophomore year, the typical co-op student interviews with prospective employers. The Center for Career Development contacts employers and arranges interviews for students. Actual placement in a co-op position is dependent on the outcome of the interview process.

Internships are available as full-time jobs during the summer or as part-time jobs during the school year. Co-op students in Construction Management and interns have a wide range of employers to choose from. Employers are located in the immediate Evansville area, in the surrounding region of Indiana, Kentucky, and Illinois, and at various places throughout the country. If a student wants to work for a company that has not been a co-op employer with UE, the Center for Career Development will contact that company and attempt to establish a program.

The value of the co-op program is the experience that it provides the student. A co-op job can be a financial benefit, but one term at work does not typically cover the cost of one term in education. The co-op program gives employers an opportunity to examine a student as a prospective employee without making a commitment to long-term employment. Likewise, the co-op program gives the student a chance to examine a company and gain experience before entering the workforce as a working professional.

Co-op students normally get a higher salary offer upon graduation than non co-op students. In many cases, the co-op employer provides a long-term employment opportunity for the co-op student upon graduation. Internships are available to students who would like to gain actual construction management work experience but still complete their degree in four years.

# HARLAXTON OPTION

Harlaxton is the University's study abroad center located in the rolling countryside of Grantham, England. Harlaxton is about a one-hour train ride north of London. Construction Management students who choose to spend a semester studying at Harlaxton have easy access to England's culture, history, and entertainment.

Harlaxton is housed in a large Victorian manor where about 200 students and faculty live and hold classes. The Manor has a state dining room and a number of historic state rooms where classes are held. Harlaxton also has a soccer field, sports hall, student lounges, and bistro.

Construction Management students who wish to study one semester in England are encouraged to do so during the first semester of their sophomore year. At Harlaxton, Construction Management students typically take Calculus, British Studies, and general education courses. Harlaxton is on the semester system and all classes earn credit at the University in the same way they would if they were taken in Evansville. General education courses can be selected that will count as required courses toward the Construction Management degree. Tuition at Harlaxton is the same as tuition at the Evansville campus, and all scholarships and loans may be applied to Harlaxton costs.

Students at Harlaxton are encouraged to travel on weekends. The Manor arranges eight to 10 weekend field trips to locations such as Bath, Wales, London, and Scotland. During some semesters, less frequent but longer trips are arranged to Ireland and throughout the continent.

Harlaxton has resident British faculty as well as visiting faculty from UE and other selected campuses in the United States. Likewise, students at Harlaxton come from UE and various other campuses around the United States.

It is also possible to attend a five-week summer session at Harlaxton and take Independent Study in Construction Management (CM 498).

## **Harlaxton Costs**

While the tuition at Harlaxton is the same as on the Evansville campus and all scholarships apply to Harlaxton, there are additional costs associated with travel. The typical round trip airfare is \$1,500 and students at Harlaxton will spend up to an additional \$4,000 on weekend trips, souvenirs, and other miscellaneous expenses. Additional expenses should be less during the summer session.



# HONORS PROGRAM – CONSTRUCTION MANAGEMENT

The Honors Program is open to select Construction Management majors on entrance to the University. Admittance to the Honors Program is determined by the University Honors Committee on the basis of standardized test scores (minimum 1900 SAT or minimum 29 ACT), an essay, and an unweighted high school GPA of 3.5 or above. The program provides participants with the opportunity to interact with other Honors Program students both socially and academically. Challenging honors courses and other academic events are available for honors students both in general education and in the major. Honors students have special library privileges, can register early, and may choose to live in Powell Residence Hall, where Honors Program students are given preference.

In Construction Management, honors students must meet the following requirements:

1. A GPA of 3.5 or better at the time of graduation.
2. Acquire a total of at least 21 points in the Honors Program made up of the following:

**Coursework** (required; 15 points)

*Honors Courses* (generally three points each) are offered on a regular basis. They include First-Year Seminar 112, various courses which fulfill the general education requirements, honors courses in other departments which are not part of the general education requirements, and honors science labs.

*Major courses* (generally three points each) are courses within the major which are given a section designation of H.

**Honors Project and Research** (required; 3 points)

In Construction Management this requirement is satisfied by the senior project sequence (Construction Management 495/497). This is a yearlong sequence in which Construction Management students write a proposal during the spring semester of their junior year and complete a comprehensive construction management design project. The honors project in Construction Management is typically more challenging, has a significant design component, and is presented at a regional or national conference.

**Study Abroad (optional; points vary)**

Studying at Harlaxton during the fall or spring semester earns two points. Completion of a Harlaxton summer semester earns one point. Students studying abroad in other locations can obtain points based on the length of stay and Honors learning experience.

## Bachelor of Science in Construction Management

<b>FALL</b>	<b>SPRING</b>
-------------	---------------

### FRESHMAN

CM 101	Introduction to Construction Industry	3	CM 110	Construction Graphics	3
			QM 227	Introduction to Statistics	3
MATH 105	College Algebra	3	CE 224	Construction Management	3
FYS 112	First-Year Seminar	3	GEN ED	General Education	3
GEN ED	Foreign Language 111*	3	GEN ED	Foreign Language 112*	3
BUS 100	Introduction to Business	3			15
		<u>15</u>			

### SOPHOMORE

CM 210	Construction Methods and Equipments	3	CM 221	Construction Materials Lab	3
			CM 240	Construction Estimation I	3
CE 183	Surveying	3	CM 230	Construction Contracts and Codes	3
ECON 102	Principles of Microeconomics	3	ACCT 210	Introduction to Financial Accounting	3
PHYS 121	Algebra Physics	4	GEN ED	General Education	3
GEN ED	General Education	3			15
		<u>16</u>			

### JUNIOR

CM 340	Construction Estimation II	3	GEO 130	Environmental Geology	3
CM 350	Construction Safety	3	CM 360	Construction Scheduling	3
LSCM 315	Introduction to Logistics & Supply Chain Management	3	MGT 377	Organizational Behavior	3
			CM 380	Building Information Modeling	3
CM 370	Mechanical, Electrical, and Plumbing	3	GEN ED	General Education Outcome 10	1
GEN ED	General Education	3		Free Elective	3
		<u>15</u>			16

### SENIOR

CM 4XX	CM Tech Elective	3	CM 4XX	CM Tech Elective	3
CM 495	CM Senior Design Project I	3	CM 497	CM Senior Design Project II	3
ENGR 409	Engineering Economy & Decision Making	3	COM 380	Intercultural Communication	3
			CM 420	Construction Laws and Ethics	3
FIN 361	Fundamentals of Finance	3		Free Elective	3
	Free Elective	3			15
		<u>15</u>			

\*Note: Only if necessary to meet the University foreign language requirement.

## Harlaxton Option Plan of Study

<b>FALL</b>	<b>SPRING</b>
-------------	---------------

### FRESHMAN

CM 101	Introduction to Construction Industry	3	CM 110	Construction Graphics	3
MATH 105	College Algebra	3	QM 227	Introduction to Statistics	3
FYS 112	First Year Seminar	3	CE 224	Construction Management	3
GEN ED	Foreign Language 111*	3	PHYS 121	Algebra Physics	4
BUS 100	Introduction to Business	3	GEN ED	Foreign Language 112*	3
		3			16
		15			

### SOPHOMORE

BRIT 2XX	General Education	3	CM 221	Construction Materials Lab	3
BRIT XXX	British Studies	3	CM 240	Construction Estimation I	3
	Free Elective	3	CM 230	Construction Contracts and Codes	3
	Free Elective	3	ACCT 210	Introduction to Financial Accounting	3
GEN ED	General Education	3	ECON 102	Principles of Microeconomics	3
		3			3
		15			15

### JUNIOR

CM 340	Construction Estimation II	3	GEO 130	Environmental Geology	3
CM 350	Construction Safety	3	CM 360	Construction Scheduling	3
CM 210	Construction Methods and Equipments	3	MGT 377	Organizational Behavior	3
CM 370	Mechanical, Electrical, and Plumbing	3	CM 380	Building Information Modeling	3
CE 183	Surveying	3	GEN ED	General Education Outcome 10	1
		3	GEN ED	General Education	3
		15			3
					16

### SENIOR

CM 4XX	CM Tech Elective	3	CM 4XX	CM Tech Elective	3
CM 495	CM Senior Design Project I	3	CM 497	CM Senior Design Project II	3
ENGR 409	Engineering Economy & Decision Making	3	COM 380	Intercultural Communication	3
FIN 361	Fundamentals of Finance	3	CM 420	Construction Laws and Ethics	3
LSCM 315	Introduction to Logistics and Supply Chain Management	3		Free Elective	3
		3			15
		15			

\*Note: Only if necessary to meet the University foreign language requirement.

# COURSES

For course descriptions, visit [evansville.edu/construction](http://evansville.edu/construction) and select Course Offerings under About Our Program.

CM 101 Introduction to Construction Industry  
CM 110 Construction Graphics  
CM 210 Construction Methods and Equipment  
CM 221 Construction Materials Lab  
CM 230 Construction Contracts and Codes  
CM 240 Construction Estimation I  
CM 340 Construction Estimation II  
CM 350 Construction Safety  
CM 360 Construction Scheduling  
CM 370 Mechanical, Electrical, and Plumbing  
CM 380 Building Information Modeling  
CM 420 Construction Laws and Ethics  
CM 495 Senior Design Project I  
CM 497 Senior Design Project II  
CM 499 Special Topics in Construction Management  
CE 183 Surveying  
CE 224 Construction Management  
ENGR 409 Engineering Economy and Decision Making  
ACCT 210 Introduction to Financial Accounting  
BUS 100 Introduction to Business  
COMM 380 Intercultural Communication  
ECON 102 Principals of Macroeconomics  
FIN 361 Fundamentals of Finance  
GEO 130 Environmental Geology  
LSCM 315 Intro to Logistics and Supply Chain Management  
MGT 377 Organizational Behavior  
QM 227 Introduction to Statistics

# FACULTY AND STAFF

<b>Name</b>	<b>Office</b>	<b>Telephone/Email</b>
<b>Hyunsoung Park, PhD</b> Construction Management Program Director and Assistant Professor	KC247	812-488-2250 hp93@evansville.edu
<b>Suresh Immanuel, PhD, PE</b> Associate Dean and Professor	KC250A	812-488-2085 ss476@evansville.edu
<b>Tonya Albright</b> Administrative Assistant	KC250	812-488-2652 ta58@evansville.edu
<b>Ray Shelton</b> Lab Manager	KC190	812-488-2292 rs249@evansville.edu

The Courses for Construction Management curriculum is taught by faculty from the School of Engineering and Computer Science and the Schroeder School of Business Administration.

# NOTES

# NOTES



1800 Lincoln Avenue  
Evansville, Indiana 47722  
[evansville.edu](http://evansville.edu)